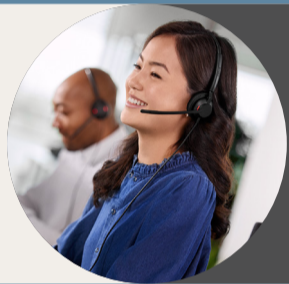


# 7 reasons to upgrade to Engage and seriously level UP customer satisfaction. Yours and theirs.

Millions of contact centers use Jabra Pro and Biz headsets, presenting a huge upgrade potential as the industry goes digital. So level UP their experience with our AI-enabled Engage headsets. Discover 7 incredible reasons to upgrade for happier customers all around.

**Upgraded comfort**  
with new pressure-relieving ear cups and non-clamping designs for enhanced all-day wearability

1

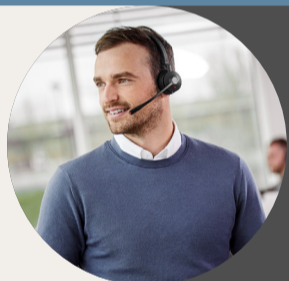


2

**Upgraded calls**  
Improved microphones & algorithms ensure they're always heard loud and clear

**Upgraded integration**  
Call and analytics integration with selected contact center platforms for easier data access and instant insights

3

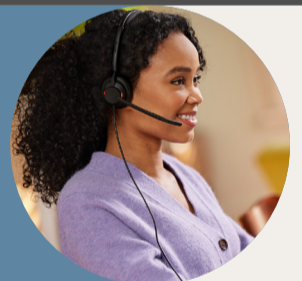


4

**Upgraded audio**  
Passive and Active Noise Cancellation options to suit every noise situation

**Upgraded customer satisfaction**  
New Engage+ voice coaching and analytics help improve customer scores in real time

5



6

**Upgraded compatibility**  
with certification for all leading virtual meeting platforms

**Upgraded durability**  
with endurance-improved designs rigorously tested and built to last, no matter what life throws at it

7



## Change it UP

Say yes to success, with an upgrade to the next generation of world-class professional audio devices.

[FIND OUT MORE](#)





## Jabra Biz 2400 II Engineered for the clearest conversations

**Jabra Biz 2400 II enables clearest conversation for closer connections with your caller. It includes acoustic shock protection, extra padding for additional comfort on the ear cushions and headband, as well as unbreakable 360° flexible spin boom arm and a reinforced cord – to suit the most demanding environments.**

### Crystal clear sound

Jabra Biz 2400 II is designed to deliver best-in-class audio performance, no matter how loud the environment is. Now with enhanced speakers in the ear cups, agents can hear customers better than ever before – offering a superior experience and faster call resolution.

### Best in class build quality

The Jabra Biz 2400 II is highly durable - no matter how challenging the contact center environment. Features like reinforced cords and an unbreakable 360° flexible spin boom arm ensure Jabra Biz 2400 II can stand up to the most demanding environments.

### Ultimate comfort

The Jabra Biz 2400 II is the lightest in its class. Leatherette ear cushions and headband padding secure an all day comfort. Available in a 3-in-1 wearing style for Mono and headband wearing style for Duo.

### Easy to deploy and manage

Jabra Biz 2400 II headsets are Microsoft Teams Certified<sup>1</sup> and optimized for use with all leading desk phone systems and Unified Communications platforms. Jabra Xpress enables you to easily configure all of your company’s audio devices from one central point.<sup>2</sup>

<sup>1</sup> Only USB CC variants have received Microsoft Teams certification <sup>2</sup> Go to [Jabra.com/xpress](https://www.jabra.com/xpress)

<sup>3</sup> Programmable buttons increase user efficiency by supporting applications including Jabra Contact Center Agent App for Cisco Finesse and Push-To-Talk functionality.

<sup>4</sup> Bluetooth connection to mobile devices with Jabra Biz 2400 II USB BT Mono/Duo only

### At a glance

#### Jabra Biz 2400 II corded headsets

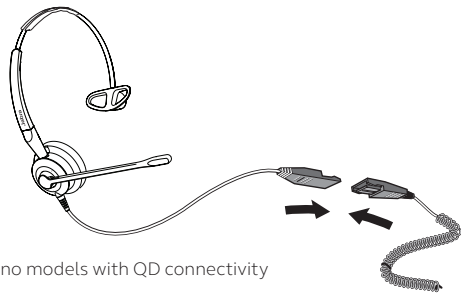
- Breath-resistant microphone with noise cancelation
- Reinforced cord and programmable buttons for USB variant<sup>3</sup>
- 40% lighter than competitors, soft pouch leatherette ear cushions, headphone padding and 360° flexible spin boom arm
- Category best quality and the lightest in its class



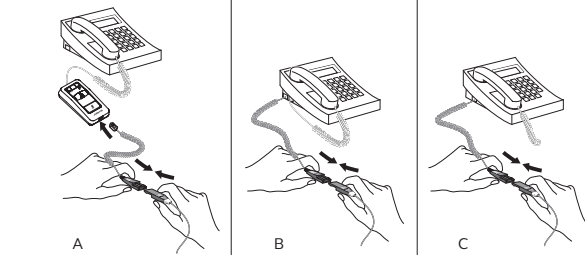
Works with<sup>4</sup>



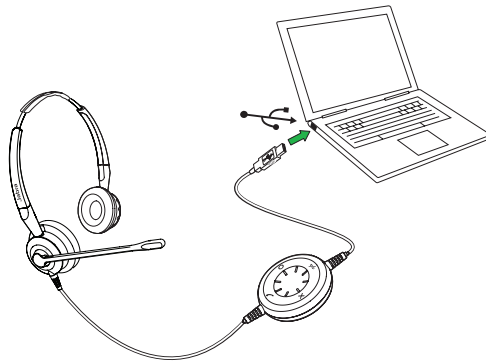
# How to connect



Duo or mono models with QD connectivity

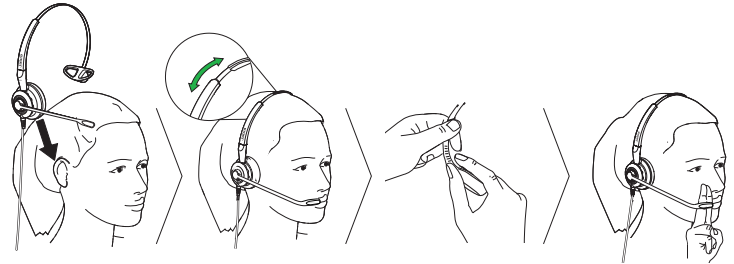


QD connectivity



Duo or mono models with USB connectivity simply plug into the USB port on your PC

# How to wear



Jabra Biz 2400 II headsets have adjustable headbands for all day wearing comfort and bendable 360° spin boom arms, so they can be easily adjusted without breaking. It is recommended to position the microphone close to your mouth (approx. two fingers width).



Features	Jabra Biz 2400 II QD Mono/Duo	Jabra Biz 2400 II USB CC Mono/Duo	Jabra Biz 2400 II USB BT Mono/Duo
Connectivity <sup>1</sup> – number of devices	1/desk phone	1/softphone	1/softphone, mobile devices <sup>2</sup>
User sound protection (PeakStop™, Noise@Work, Acoustic Shock, G616 compliant)	Yes	Yes	Yes
Digital Signal Processing	No	Yes	Yes
Breath-resistant microphone	Yes	Yes	Yes
Noise cancelling microphone	Yes	Yes	Yes
Microphone (G-MOS, Tx, CC)	4.56	4.56	4.56
Speaker (wideband/up to khz)	4.5/ 6.8	6.8	6.8
Hi-Fi sound (up to khz)	No	16	16
Adjustable boom arm	360°	360°	360°
Microsoft Certification	Not Applicable	Microsoft Teams	Skype for Business
Flexible boom arm	Yes	Yes	Yes
USB-controller	No	Yes	Yes
Ear cushions	Large leatherette <sup>3</sup>	Large leatherette <sup>3</sup>	Large leatherette <sup>3</sup>
Headband padding	Yes	Yes	Yes
Wearing styles	Headband, earhook <sup>4</sup> neckband <sup>4</sup>	Headband, earhook <sup>4</sup> neckband <sup>4</sup>	Headband, earhook <sup>4</sup> neckband <sup>4</sup>
Headset weight without cord - Mono/Duo (g)	45/70	43/66	43/66
Cord length (cm)	100	230	250

**Compatibility** For compatibility information go to [Jabra.com](https://www.jabra.com)

<sup>1</sup> All QD headsets require a lower QD connection cable or other enabler (Jabra Link 180, 230, 260, 260 MS, 265 or Jabra Link 280) for a complete solution. <sup>2</sup> The USB controller on the headset includes a Bluetooth circuit, which gives you up to 10m range between the headset and a Bluetooth enabled device. <sup>3</sup> Larger ear cushions come as standard on Duo versions and are available as an accessory for Mono versions. The larger ear cushions are only suitable for the headband version of the Biz 2400 II and not for other wearing styles like neckband. <sup>4</sup> 3-in-1 wearing style for Mono only.


**Jabra** GN

## Jabra Biz 2300

### Engineered to be the affordable contact center headset

Take your brand's voice to a higher level with the power of better conversations. Jabra Biz 2300 corded headset is an investment in world-class sound, high user satisfaction and competitive total cost of ownership.

#### Crystal clear sound

Your knowledge workers are your brand's front line. Jabra Biz 2300 will ensure every conversation becomes a great brand experience. Jabra Biz 2300 features HD Voice/Wideband speaker performance and best-in-class noise cancellation.

#### Superior comfort

The Jabra Biz 2300 blends light-weight yet durable construction with an unobtrusive, professional Scandinavian design aesthetic. The Jabra Biz 2300 works hard, looks great and is designed for easy daily handling. It is a headset built to be comfortable all day long.

#### Advanced build

Jabra Biz 2300 is built with total cost of ownership in mind. Beside 360° degree rotating break proof boom arm and reinforced cord, Jabra Biz 2300 is built to withstand the everyday life of a high-performing environment.

#### Easy to deploy and manage

Jabra Biz 2300 is certified for Microsoft Teams<sup>1</sup> and Works With Chromebook, and is optimized for use with all leading desk phone systems and Unified Communications platforms. Jabra Xpress enables you to easily configure all of your company's audio devices from one central point.<sup>2</sup>

<sup>1</sup> Only USB variants have received Microsoft Teams certification <sup>2</sup> Go to [Jabra.com/xpress](https://www.jabra.com/xpress)

<sup>3</sup> Programmable buttons increase user efficiency by supporting applications including the Jabra Contact Center Agent App for Cisco Finesse and Push-To-Talk functionality.

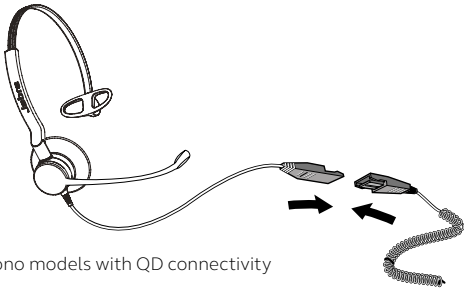
At a glance

#### Jabra Biz 2300 corded headsets

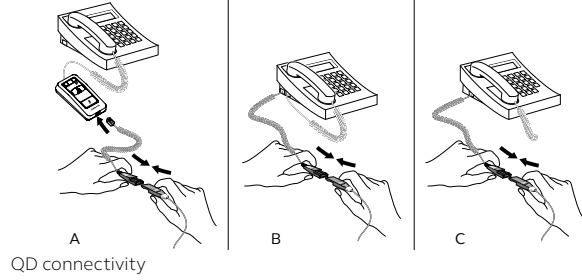
- Breath-resistant microphone with noise cancellation
- Durable reinforced cord and programmable buttons for USB variant<sup>3</sup>
- 20% lighter than competitors with padded ear cushions and 360° flexible spin boom arm
- All-day wearing comfort



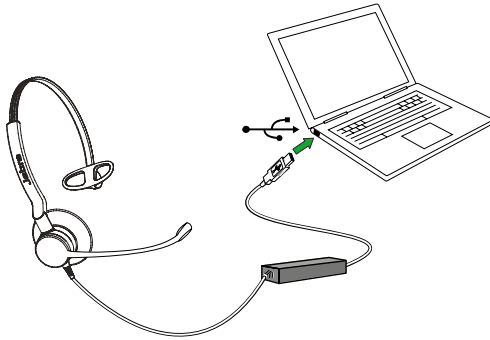
# How to connect



Duo or mono models with QD connectivity



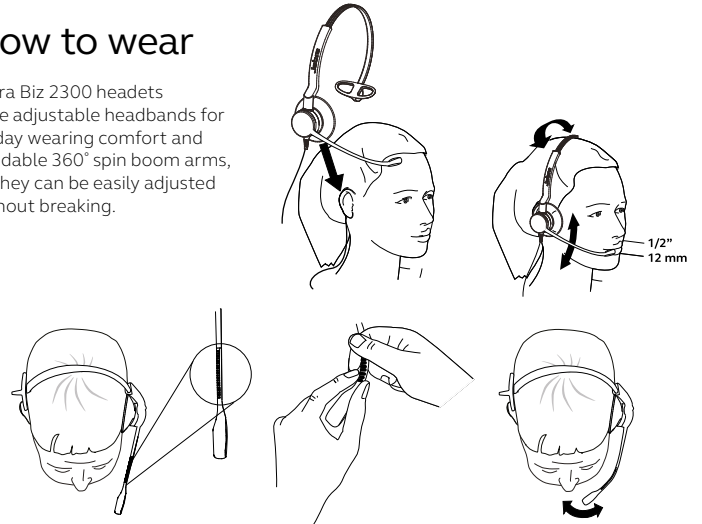
QD connectivity



Duo or mono models with USB connectivity simply plug into the USB port on your PC

# How to wear

Jabra Biz 2300 headsets have adjustable headbands for all day wearing comfort and bendable 360° spin boom arms, so they can be easily adjusted without breaking.



Features	Jabra Biz 2300 QD Duo <sup>1</sup>	Jabra Biz 2300 QD Mono <sup>1</sup>	Jabra Biz 2300 USB-A/USB-C Duo	Jabra Biz 2300 USB-A/USB-C Mono
Connectivity – number of devices	1/desk phone	1/desk phone	1/softphone	1/softphone
User sound protection (PeakStop™, Noise@Work, Acoustic Shock, G616 compliant)	Yes	Yes	Yes	Yes
Digital Signal Processing	No	No	Yes	Yes
Breath-resistant microphone	Yes	Yes	Yes	Yes
Noise cancelling microphone	Yes	Yes	Yes	Yes
Microphone (G-MOS, Tx, CC)	4.3	4.3	4.3	4.3
Speaker (wideband/up to khz)	6.8	6.8	6.8	6.8
Hi-Fi sound (up to khz)	No	No	16	16
Adjustable boom arm	360°	360°	360°	360°
Microsoft Certification	Skype for Business	Skype for Business	Microsoft Teams	Microsoft Teams
Flexible boom arm	Yes	Yes	Yes	Yes
USB-controller	No	No	Yes	Yes
Ear cushions	Foam and leatherette	Foam and leatherette	Foam and leatherette	Foam and leatherette
Wearing styles	Headband	Headband	Headband	Headband
Headset weight - without cord (g)	65	43	65	43
Cord length (cm)	107.5	107.5	235	235

**Certifications**

<sup>1</sup> Using the Jabra Biz 2300 QD Wideband, Mono or Duo headset together with Jabra Link 260 MS you get a headset solution that meets Skype for Business standard.  
<sup>2</sup> USB products only. This product works with devices capable of running the latest version of ChromeOS and has been certified to meet Google's compatibility standards. Google is not responsible for the operation of this product or its compliance with safety requirements. Chromebook and the Works With Chromebook badge are trademarks of Google LLC.  
 © 2022 GN Audio A/S. All rights reserved.  
 ® Jabra is a registered trademark of GN Audio A/S.  
 The Bluetooth® word mark and logos are registered trademarks owned by the Bluetooth SIG, Inc. and any use of such marks by GN Audio A/S is under license.



**Jabra** GN

## The Jabra Biz 1500 Engineered for the cost-conscious contact center

### The Biz 1500 is an affordable, professional corded headset for all-day conversations

#### Professional sound at an affordable price

Noise-cancelling air shock microphone reduces background noise and sharp breathing sounds. HD Voice makes conversations sound vibrant and lifelike – ideal for the crowded call center that needs to deliver a professional customer experience.

#### Tough design that won't let you down

Demanding contact centers need headsets that can survive intense use – all-day, every day. The Biz 1500 is built with durable materials and features a 270° flexible spin boom arm that can be rotated without the risk of breaking.

#### Comfortable and easy to use

Lightweight and with an ergonomically designed frame, the Biz 1500 is made to be worn all day. Comfortable foam ear cushions keep ears cool – allowing agents to stay focussed on calls. USB versions come with a control unit for simple call control.

#### Connection and wearing style options

The Biz 1500 range offers mono and stereo models, and a choice of USB and QD versions.

#### Easy mass deployment for all devices

Jabra Xpress enables easy configuration for all of your company's audio devices, and from one central point<sup>1</sup>.

<sup>1</sup> Go to [Jabra.com/xpress](http://Jabra.com/xpress)

At a glance:

#### Jabra Biz 1500 corded headsets

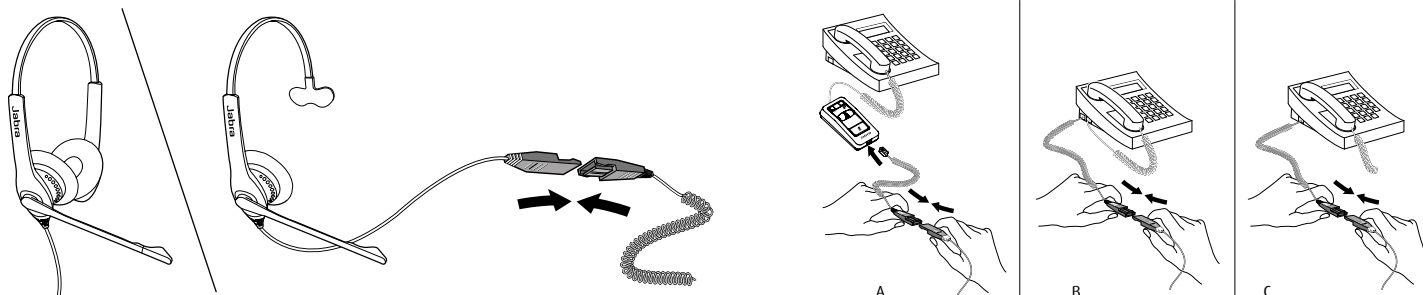
- Professional sound at an affordable price
- Tough design for all-day use
- Comfortable and easy to use
- Lightweight and with foam ear cushions
- PeakStop™ protects against spikes in sound



Works with



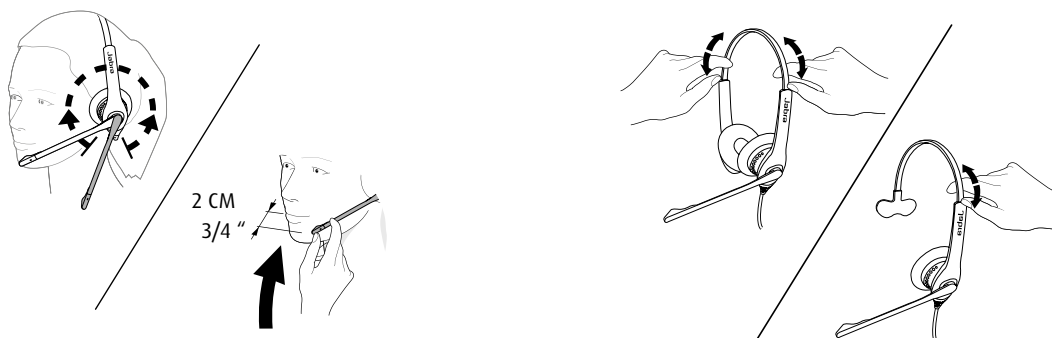
## How to connect



Duo or mono available with QD connectivity (USB available)

QD connectivity

## How to wear



Jabra Biz 1500 has a 270° boom arm so it can be easily adjusted without breaking.

Duo or mono available. Adjustable headband



Features	Jabra Biz 1500 QD Duo	Jabra Biz 1500 QD Mono	Jabra Biz 1500 USB Duo	Jabra Biz 1500 USB Mono
Connectivity* – how many devices	1	1	1	1
User sound protection (PeakStop™)	Yes	Yes	Yes	Yes
Digital Signal Processing	No	No	Yes	Yes
Noise cancelling microphone	Yes	Yes	Yes	Yes
Microphone (G-MOS, Tx, CC)	4.3	4.3	4.3	4.3
Speaker (HD-Voice/wideband - up to)	4.5	4.5	6.8	6.8
Boom arm adjustable	270°	270°	270°	270°
Boom arm flexible	Yes	Yes	Yes	Yes
USB-Controller	No	No	Yes	Yes
Cord length (cm)	95	95	230	230
Ear cushions	Foam	Foam	Foam	Foam
Wearing styles	Headband	Headband	Headband	Headband
Headset weight (incl. cord) (g)	115	88	116	92
<b>Compatibility</b>	For compatibility information go to <a href="https://www.jabra.com">Jabra.com</a>			

\* All QD headsets require a connection cable (Jabra Link 180, 230, 260, 265 or Jabra Link 280)



## Jabra Biz Series Corded Headsets

The Biz Series offers a range of professional corded headsets with great sound, designed for call center agents, customer service advisors and others who listen and talk to customers for a living.

### Crystal clear conversations

Noisy workplaces can make calls a struggle for agents and customers. Biz Series headsets take noise out of the equation, helping you focus on the conversation. HD Voice technology and noise-cancelling microphones ensure crystal clear sound quality at both ends of the call for a more professional customer experience.

### All day comfort

Biz Series headsets are made for all day wear, with ergonomically designed frames, lightweight design and super soft foam or leatherette ear cushions. Headbands and microphone booms can be adjusted for comfort.

### Tough design

High-performing contact centers and other call-intensive environments need headsets that can survive countless hours of use. The Biz Series headsets are highly durable, with an adjustable boom-arm that can be rotated without the risk of breaking.

### Easy to deploy and manage

Biz Series headsets are optimized for use with all leading desk phone systems and Unified Communications platforms.<sup>1</sup> Jabra Xpress enables you to easily configure all of your company's audio devices from one central point.<sup>2</sup>

### Extensive range

Biz Series headsets are available in QD versions for your desk phone or USB versions for your computer, and in Mono and Duo versions.

Works with:



desk phone and softphone

Certified:



**GN** Making Life Sound Better

### Jabra Biz 1500

- **Quality sound**  
Noise cancelling microphone for truly professional sound
- **Easy to control**  
Durable build with volume control unit and mute for USB version
- **All day comfort**  
Foam cushions and 270° flexible spin boom arm

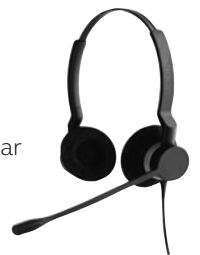
**Professional, durable and comfortable**



### Jabra Biz 2300

- **Crystal clear sound**  
Breath resistant microphone with noise cancellation
- **Advanced build**  
Durable reinforced cord and programmable buttons for USB variant<sup>3</sup>
- **Superior comfort**  
20% lighter than competitors with padded ear cushions and 360° flexible spin boom arm

**All day wearing comfort**



### Jabra Biz 2400 II

- **World-class sound**  
Breath resistant microphone with noise cancellation
- **Best in class build quality**  
Reinforced cord and programmable buttons for USB variant<sup>3</sup>
- **Ultimate comfort**  
40% lighter than competitors, soft pouch leatherette ear cushions, headphone padding and 360° flexible spin boom arm

**Best in class quality and lightest in its class**



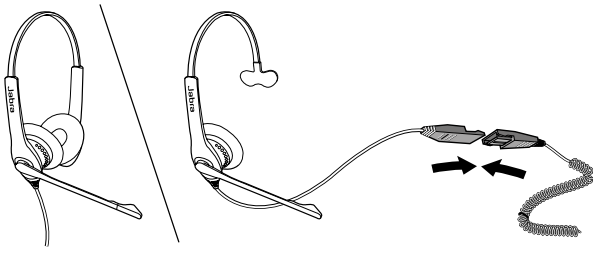
<sup>1</sup> Applies to Biz 2300 and Biz 2400 II only. Excludes Biz 1500.

<sup>2</sup> Go to [Jabra.com/xpress](http://Jabra.com/xpress)

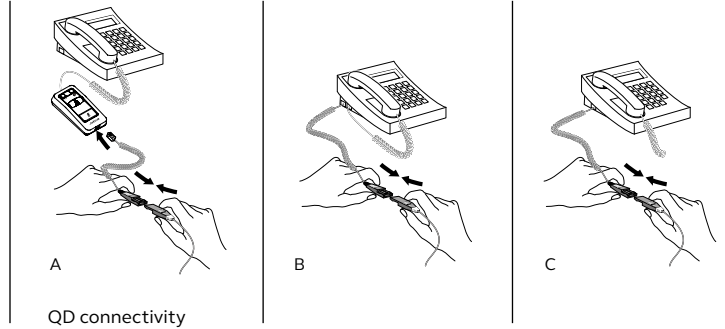
<sup>3</sup> Programmable buttons increase user efficiency by supporting applications including the Jabra Contact Center Agent App for Cisco Finesse and Push-To-Talk functionality.



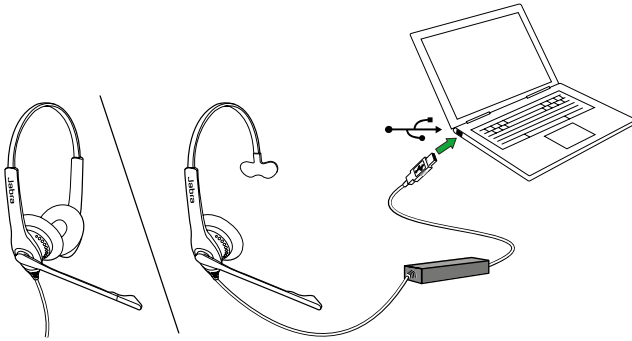
## 01 How to connect



Duo or mono models with QD connectivity

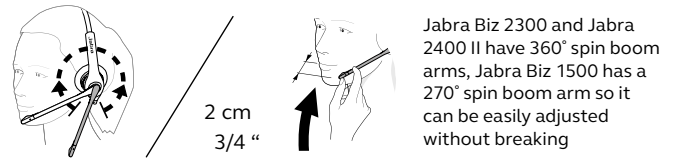


QD connectivity

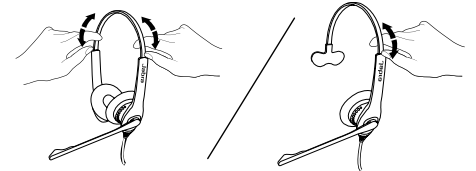


Duo or mono models with USB connectivity simply plug into the USB port on your PC

## 02 How to use



Adjustable headband available for both duo and mono versions



## Features and specifications



Jabra Biz 1500



Jabra Biz 2300



Jabra Biz 2400 II

		Jabra Biz 1500	Jabra Biz 2300	Jabra Biz 2400 II
Work Space	At office desk	•	•	•
	Desk phone <sup>1</sup>	•	•	•
Connectivity	Softphone	•	• <sup>2</sup>	•
	Breath resistant mic		•	•
Sound	QD - Wideband up to 4.5khz	•	•	•
	QD - Wideband up to 6.8khz		•	•
	USB - Wideband up to 6.8khz	•	•	•
	USB - Hi-Fi sound up to 16khz		•	•
Comfort/ Wearing Style	Ear cushions	Foam	Foam and leatherette	Leatherette
	Flexible spin boom arm	270°	360°	360°
	Headband padding			•
	Headband	•	•	•
	Earhook (Mono only)			•
	Neckband (Mono only)			•
	Mono/Duo	•	•	•
Cable	Corded	•	•	•

<sup>1</sup> All QD headsets require a connection cable (Jabra Link 180, 230, 260, 260 MS, 265 or Jabra Link 280)

<sup>2</sup> USB-A and USB-C variants available



MSRP USD  
121-306

Jabra Biz 2300



MSRP USD  
207-380

Jabra Biz 2400 II



MSRP USD  
220-244

Jabra Engage 50



MSRP USD  
179-239

Jabra Engage 40



MSRP USD  
219-339

Jabra Engage 50 II

2-year warranty	3-year warranty	3-year warranty	3-year warranty	3-year warranty
In-Line Link	In-Line Link	Detachable, programmable Link (optional)	In-Line Link (optional)	Detachable programmable Link with wheel volume control (optional)
				SmartRinger
Certified for MS Teams	Certified for MS Teams	Certified for MS Teams	Certified for MS Teams	Certified for MS Teams
Works with leading CC platforms	Works with leading CC platforms	Works with leading CC platforms	Works with leading CC platforms	Works with leading CC platforms
Intuitive call control	Intuitive call control	Call control with leading CC platforms	Call control with leading CC platforms	Call control with leading CC platforms
Lightweight comfort	Lightweight comfort with leatherette ear cushions	Lightweight comfort with leatherette ear cushions	Ultra-light weight with maze pattern earcups	Ultra-light weight with maze pattern cups, headband padding (on stereo only)
SafeTone hearing protection	SafeTone hearing protection	SafeTone 2.0 hearing protection	SafeTone 2.0 hearing protection	SafeTone 2.0 hearing protection
Single microphone system	Single microphone system	3-microphone system	2-microphone system	3-microphone system
Cancels up to 20dB of background noise	Cancels up to 20dB background noise	Cancels up to 36dB background noise	Cancels up to 20dB background noise	Cancels up to 36dB background noise
Speakers optimized for speech clarity	Speakers optimized for speech clarity	Speakers optimized for speech clarity	Speakers optimized for speech clarity	Speakers optimized for speech clarity
		Customizable status light	Live background noise guidance	Live background noise guidance
		Live boom-arm guidance (Jabra Direct only)	Live conversation flow guidance	Live conversation flow guidance
				Live Microphone Position Guidance
			Data integration service for GSIs (SDK)	Data integration service for GSIs (SDK)
			Improved PNC	Improved PNC