

THE NEW RETAIL ERA IS HERE

START THE JOURNEY

Honeywell

OUR MISSION

Honeywell is committed to empowering retailers to evolve their operations with assistive technology, intelligent data and optimization software to drive end-to-end productivity. Our goal is to help retailers enhance customer and associate experiences throughout the retail environment through digital enablement, leading to more achievable and sustainable growth.

75+ YEARS RETAIL EXPERTISE

Honeywell’s unique portfolio of business intelligence software and labor productivity tools have been a driving force throughout worldwide retailers for more than 75 years, building on leading brands and technologies. Honeywell retail solutions are fit-for-purpose in a wide variety of retail workflows, and demanding operations that need to transition their manual workforce to more automated, modern processes. Our flexible solutions unify workers to increase productivity, accuracy and efficiency while greatly improving their overall job satisfaction.

Our focus is helping retailers address today’s most critical needs to prepare for the future allowing you to focus on what really matters: **Discovering Unified Commerce.**

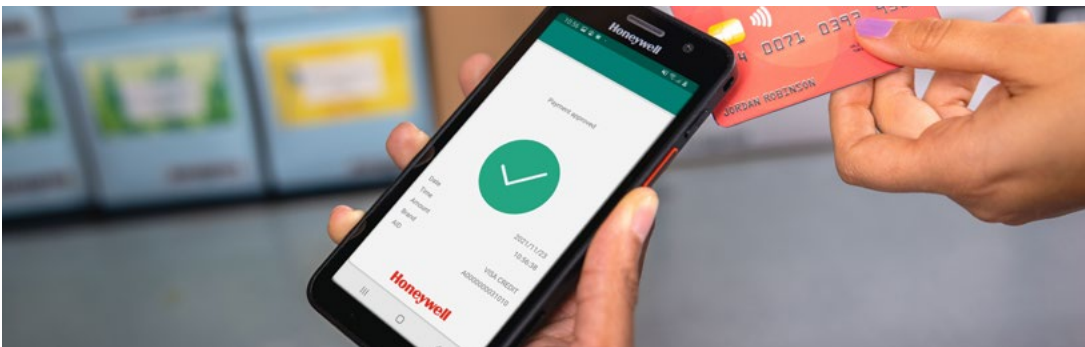


PRIORITIES AND CHALLENGES FACING RETAILERS



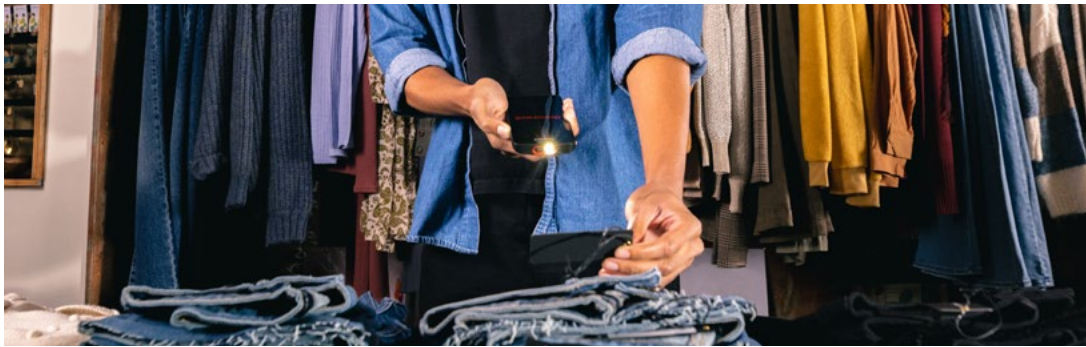
SHOPPER EXPERIENCE

Shoppers want seamless, personalized, flexible retail experiences and aren’t afraid to jump to different brands to find exactly that. Every retail channel, both online and in-store, needs to be as integrated and data-driven as possible so retailers can offer bespoke journeys for each shopper who interacts with their brand.



BUSINESS TRANSFORMATION

As market changes accelerate how retailers handle day-to-day business, it’s clear that reactive improvements aren’t enough. Retailers are looking for integrated strategies that bring everything from the back-of-store to the last mile of delivery together.



WORKFORCE OPERATIONS

Amidst a backdrop of ongoing labor challenges, retailers are encountering fierce competition for high-quality staff to answer shoppers’ demands. Retailers must leverage innovative technology to keep their associates ahead of the curve when it comes to meeting ever-escalating shopper demands.

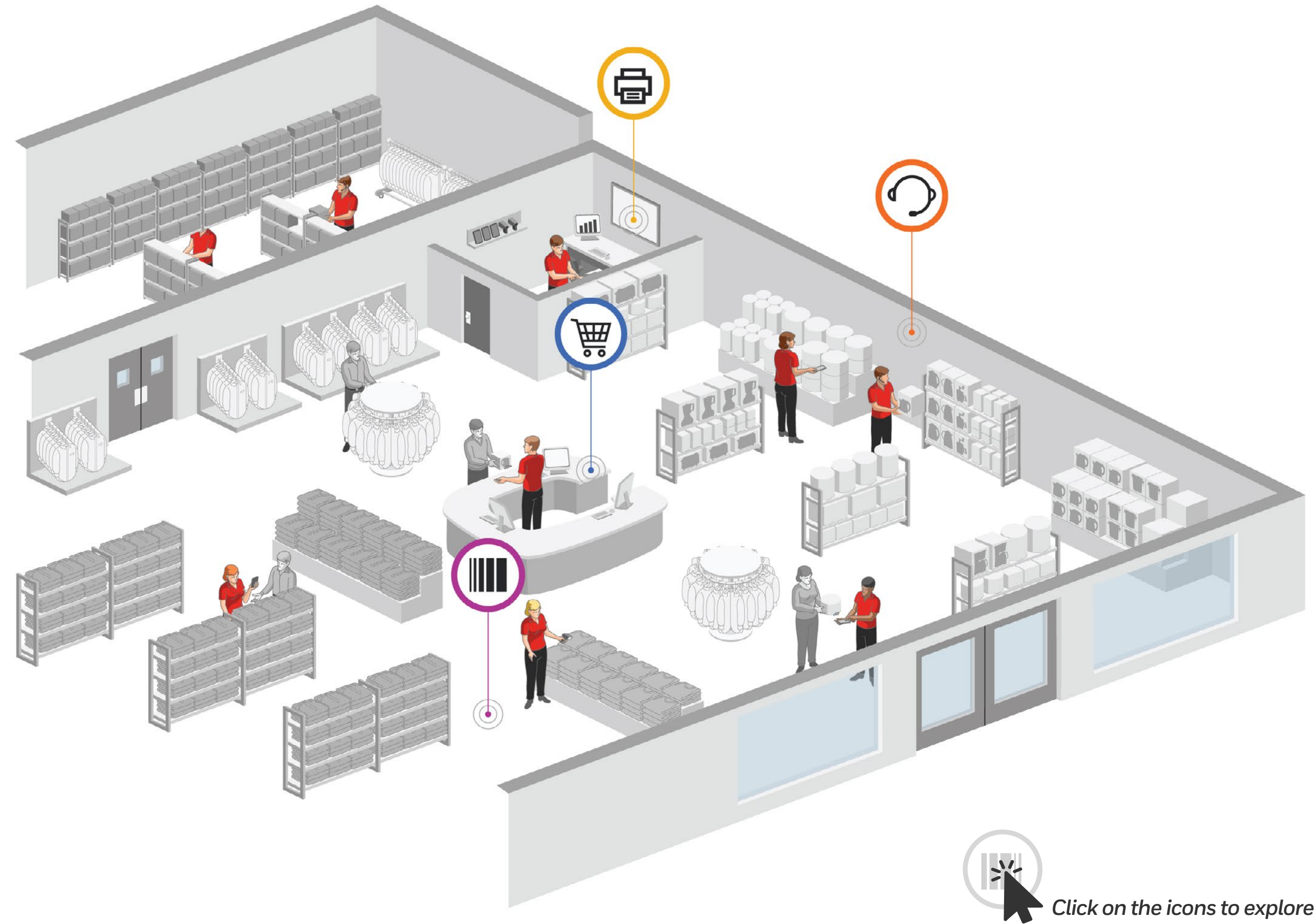


COST OPTIMIZATION

Economic volatility, consumer uncertainty, and the need to invest means that retailers must find advantages for growth and margins in every step of every workflow.

ENHANCE YOUR RETAIL OPERATION WITH HONEYWELL SOLUTIONS

With this, Honeywell gives you end-to-end technology solutions that easily connect your people, assets, and processes to drive greater customer service, productivity, agility, and efficiency throughout your entire retail enterprise.





RETAIL BEST SELLERS

Honeywell is focused on delivering innovative retail solutions for our customers that drive end-to-end productivity. Our solutions help retailers manage large amounts of data while empowering associates to have instant access to organizational knowledge, streamlining and improving customer interactions. Our portfolio offers power handheld mobile computers, long-range barcode scanners, always-connected voice solutions, printers and software.

Explore the Portfolio 



MOBILE SOLUTIONS FOR MOBILE WORKERS

Honeywell’s mobility devices combine the advantages of consumer devices and high-end industrial mobile computers and tablets into a single rugged package. Our mobile computers are built to withstand the most challenging retail environments. They are sleek and lightweight devices that have power management advantages, ensuring that batteries will last up to two full shifts for those running on Mobility Edge™.

For mobile workers on the retail salesfloor, battery life is crucial because every second lost to swapping devices that need recharging represents lost productivity and impedes customer satisfaction.

ERROR-PROOF YOUR RETAIL ENTERPRISE WITH THE INDUSTRY’S MOST ADVANCED ULTRA-RUGGED MOBILE DEVICES READY FOR THE TOUGHEST ENVIRONMENTS.



I MOBILITY

Handhelds



MOBILITY EDGE CT37

The CT37 mobile computer offers a consumer-like phone experience in an enterprise-grade solution. Built on the Mobility Edge™ platform, the CT37 can be quickly configured and rapidly deployed throughout your workforce, ensuring a long lifecycle and secure solution for frontline retail associates. With powerful scanning, processing power, and 5G and Wi-Fi 6E enablement, the CT37 is a game-changing solution for retailers who want to win at every turn of their operations.

POWER UP WITH:
8675i, Guided Work, Operational Intelligence, SRX3 Headset



MOBILITY EDGE CK67

CK67 Mobile Computers, built on the Mobility Edge platform, are ultra-rugged, all-purpose productivity solutions that ensure reliable performance, ergonomic design, 5G and Wi-Fi 6E data connectivity for demanding users in warehouse and distribution center environments. Featuring the latest Qualcomm® QCM4490 processor and memory technology for high-performance and demanding applications through Android® 18. With the powerful FlexRange™ XLR scan engine, the CK67 is ready for intense barcode scanning workflows to maximize end-to-end productivity.

POWER UP WITH:
8675i, Guided Work, Operational Intelligence, SRX3 Headset



MOBILITY EDGE CK62

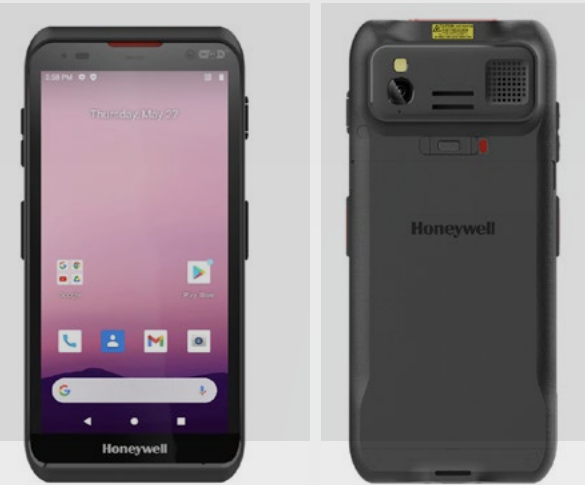
The lightweight, rugged CK62 mobile computer is an ideal mid-range solution for warehouse and distribution center environments. The CK62 provides reliable and fast data access with 5G and Wi-Fi 6E capabilities for always-on connectivity in any workflow. Reliable in harsh conditions and embedded with the FlexRange™ XLR scan engine and a 7,000-mAh battery, the CK62 is ready to stand the test of your most demanding workflows, with support from Android 14 through 18.

POWER UP WITH:
Operational Intelligence



| MOBILITY

Handhelds



SCANPAL EDA56

The Honeywell ScanPal™ EDA56 WLAN is a Wi-Fi 6 mobile computer that provides higher data rates and lower latency, meaning faster access to information in densely connected environments. The EDA56’s design is ideal for in-store operations, salesfloor, micro-fulfillment centers and last mile applications

POWER UP WITH:
8675i, Guided Work, Operational Intelligence, SRX3 Headset

Tablets



SCANPAL EDA10A

The Honeywell ScanPal EDA10A tablet is a rugged yet lightweight solution for mobile business users who need fast, reliable mobile data access on a high-resolution, 10-inch screen. Featuring 5G cellular and Wi-Fi 6 communications, the EDA10A provides high-speed connectivity indoors and out for users on the salesfloor, customer service, checkout and other applications

POWER UP WITH:
8675i, Guided Work, Operational Intelligence, SRX3 Headset



MOBILITY EDGE RT10

The Honeywell RT10A rugged tablet is designed for rapid user adoption, minimized TCO and optimized device management. Whether you’re a supervisor or a shop floor employee, a manager or a maintenance worker, the RT10A is ready to fit into your daily workflow.

POWER UP WITH:
The Grani™ XP 199Xi SR/XR/XLR

Wearable



MOBILITY EDGE CW45

Setting a new standard in hands-free productivity and performance for the frontline worker. Built on the Mobility Edge™ for longevity and with FlexRange scanning distances, CW45 is a powerhouse wearable computer helping empower workers to improve transaction speed and throughput.

POWER UP WITH:
8675i, Guided Work, Operational Intelligence, SRX3 Headset





WEARABLE TECHNOLOGY

In mobile workflows, less wasted movement produces greater efficiency. This is especially true for tasks like picking workflows, large package handling, sortation, truck loading and other common workflows in warehouse and back-to-the-store. With Honeywell’s variety of wearable solutions, there’s no need for your mobile workers to find, pick up, and set down a handheld scanner. And with greater efficiency comes greater productivity, helping your business keep pace with demand, while reducing labor costs and improving customer service.



| WEARABLE TECHNOLOGY

Wearable Computer



CW45

Setting a new standard in hands-free productivity and performance for the frontline worker. Built on the Mobility Edge platform for longevity and with FlexRange scanning distances, CW45 is a powerhouse wearable computer helping empower workers to improve transaction speed and throughput.



POWER UP WITH:
8675i, Guided Work, Operational Intelligence, SRX3 Headset

Wearable Scanners



8675i

Fast and accurate tracking of goods is critical to efficient operation for order fulfillment and inventory management. With FlexRange scanning distances, 8675i enables wearable scanning in applications that would have previously required a handheld device.



POWER UP WITH:
CT30XP, CT45XP, CW45, Guided Work, Operational Intelligence



8680i

The 8680i Wearable Mini Mobile Computer is a cost-efficient solution driving enhanced productivity through a direct wireless connection to the host and interactive display.



POWER UP WITH:
CT30XP, CT45XP, CW45, Guided Work, Operational Intelligence



8690i

The Honeywell 8690i wearable device is a compact, high-performance, hands-free mini mobile computer for your business that will help you improve workflow efficiency and reduce costs. Industry-standard EPC Global Class 1 Gen 2, RFID reader ensures that the 8690i can read all common supply chain RFID tags.



POWER UP WITH:
CT30XP, CT45XP, CW45, Guided Work, Operational Intelligence



| WEARABLE TECHNOLOGY

Voice Automated Solutions



GUIDED WORK

Honeywell’s Guided Work solutions flexible platform provides options from general purpose, purpose built or a hybrid of technologies. Voice software performs on Android, iOS and Honeywell foundational Talkman series.

POWER UP WITH:
CT30XP, CT45XP, CW45, Operational Intelligence

Voice Headsets



SRX3 WIRELESS HEADSET

The SRX3 Wireless Headset features the next generation in Bluetooth® wireless headset technology — raising the standard in mobile workforce ergonomics, productivity and accuracy while enabling voice-directed workflow efficiencies. Superior speech-recognition technology and flexible configurations empower your mobile workforce to excel in a variety of industrial applications as well as demanding in-store picking, distribution and fulfillment environments.





A NEW ERA FOR RETAIL SCANNING

State-of-the-art scanning systems are a necessity for today's retail enterprise and their mobile workforce. Throughout Honeywell's years of innovation, we've developed a variety of scanners to meet your every retail need.

ULTRA-RELIABLE INDUSTRIAL AND WEARABLE SCANNERS.

Even in challenging working environments, you can trust our handheld, industrial-grade barcode scanners to provide superior durability and reliability. Our scanners are encased in waterproof and dustproof housings and rubberized to reduce damage from falls or tumbles, providing a long life cycle and low cost of ownership. Our scanners are perfect for fastpaced, high-volume barcode scanning.



| SCANNERS

Industrial Scanners



GRANIT ULTRA SCANNER

Ultra-scan performance, ultra durability and ultra-easy to use. The Granit Ultra is an ideal scanning solution for any warehouse or distribution center environment. When you need to fulfill complex or voluminous orders, are dealing with hard-to-scan items, or trying to stay ahead of customer lead time demands, the Granit Ultra is ready to step in and optimize your scanning operations. Granit Ultra integrates high-speed processing, AI algorithms, and decoding enhancements to result in an average 45% scanning speed increase over the Granit XP, enabling improved productivity.



POWER UP WITH:
CT30XP, CT45XP, RT10, Operational Intelligence

Retail Scanners



XENON ULTRA

Continuing the legacy of barcode technology, Honeywell’s Xenon Ultra delivers enhanced scan performance and premium features, allowing retailers to stay productive and keep customer service as a top priority. Xenon Ultra – available in both corded and cordless configurations – helps ensure associates’ attention is kept on maximizing shopper experiences. The cordless version accepts multiple power sources – battery-free supercapacitor or standard lithium-ion battery – and is available in contactless charging orientations. In addition to a green-dot aimer to visibly enhance targeting and improve scan accuracy, the newly engineered and innovative scan platform empowers snappy scanning operations.



POWER UP WITH:
CT30XP, CT45XP, RT10, Operational Intelligence



VOYAGER XP 14xx

The Voyager™ Extreme Performance (XP) cordless scanner delivers industry-leading scanning capability on traditional barcodes and digital screens – even on damaged and difficult-to-read codes. With better durability than any competitive scanner in its class – this scanner is a perfect option for workflows that include 1D and 2D barcode reading and require a more robust and reliable solution. The scanner’s extended scan distance will reach right to the bottom of the cart without the need to bend, wasting time at checkout.



POWER UP WITH:
CT30XP, CT45XP, RT10, Operational Intelligence



I INDUSTRIAL SCANNERS

Presentation Scanner



GENESIS XP

The Genesis XP features 20% faster scanning speed and a larger scanning area than previous products. Honeywell’s field proven XP scanning technology handles poorly printed and damaged barcodes with ease. Impressive depth of field allows barcodes to be read even if placed right at the face of the scanner. Featuring a full 1 mega-pixel imager and fast processor, the Genesis XP reads barcodes fast and handles a high level of motion tolerance resulting in fewer repeat scans, keeping employees productive and ideal for checkout operations and products checks.



POWER UP WITH:
CT30XP, CT45XP, RT10, Operational Intelligence

RFID Scanner



IH40 RFID READER

The IH40 RFID reader, combined with RFID tagging, offers an easier solution to keep track of high moving inventory with less effort. Retailers can count inventory in the store and warehouse 25 times faster than with barcodes, often in a matter of a few hours, enabling more frequent inventory updates and closer management of inventory levels. Easy to use and ergonomically balanced, when paired with a Honeywell mobile computer, the IH40 offers fast, accurate UHF RFID inventory capture and convenient, integrated 1D/2D barcode capability.



POWER UP WITH:
CT30XP, CT45XP



CONSISTENT SOLUTIONS FOR CONSISTENT WORKFLOWS

From desktop to industrial to mobile, Honeywell printers are the clear choice for a wide variety of labeling applications. The built-in “smarts” of our industrial printers mean greater efficiency and lower cost, with wired and wireless solutions for all high-demand printing needs. Our desktop printers are quiet, compact, intuitive and reliable– with a range of configurations designed to excel in your business environment. Our mobile printers are built to withstand punishing field conditions, enabling a full day of printing without recharging and maximizing printer uptime..



FIXED PRINTERS ARE YOUR TRUSTED ALLIES.

| PRINTERS

Mobile Printer



RPf

The RPf Series is a rugged and reliable direct thermal portable label printer that offers easy integrated device management, a high level of security throughout the entire printer lifespan, and upgrades that allow your printers to be updated with enhanced features in direct store delivery, store picking, price checking, mobile POS and other appliances in retail storefloor.



POWER UP WITH:
Operational Intelligence

Industrial Printer



PD45/PD45S

The PD45 is a commercial grade industrial printer, which is suited for back-to-the-store, ecommerce and warehouse operations. The PD45 is available with standard features such as smart printing capability, in which users can configure and finetune settings without the need for a host computer by running apps right inside the printer – minimizing the need to connect to a PC. With Honeywell print platform that supports multiple print languages, PD45 can be an effective alternative for guaranteeing the speed that retailers need in today’s customer demand.



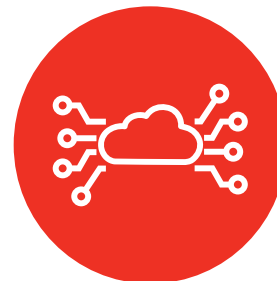
POWER UP WITH:
Operational Intelligence

OUR SIGNATURE PLATFORMS AND SOFTWARE FOR RETAIL



MOBILITY EDGE™

By definition, the Mobility Edge platform strengthens security, accelerates deployments, extends the life of your solution, and optimizes business performance. By design Mobility Edge is built to enable seamless evolution, allowing supply chain operations to realize even greater efficiency, simplicity and opportunities to innovate and grow with confidence. When your operation is invested in mobility solutions, you need a durable, stable and secure platform to maximize and protect that investment. As an innovative leader in retail, you need to stay on top of emerging technology. Stay ahead of the curve. Ahead of the competition. Today and in years to come.



OPERATIONAL INTELLIGENCE

Honeywell Operational Intelligence provides actionable insights into critical areas such as mobility devices, printer usage, and network connectivity. These insights can be turned into automated workflows that optimize in-store processes for greater productivity.



SCANPAL™

Our ScanPal Mobile platform is the perfect entry level secure platform for retailers looking to keep upfront costs low, but ensure they have a strong reliable platform. The ScanPal series promotes the avoidance of using low costs consumer grade devices and gives retailers the ability to have a supported, rugged device without the issues leveraging consumer devices in a retail environment. The latest ScanPal™ platform is built on Qualcomm Snapdragon octa-core 2.0GHz processor and robust wireless connectivity through NFC, Wi-Fi 5, Bluetooth 5.1 and 4G LTE communication. This platform is built on Android 11 and can be upgraded to Android 13* minimizing maintenance issues and ensuring long-term feature support.



HONEYWELL SMART PAY

Smart Pay enables Honeywell mobile computers to become secure and contactless mobile points-of-sale, allowing customers to submit a payment anywhere and turning shoppers into buyers. Smart Pay is designed to integrate with the merchant's existing POS software and payment processing systems, preserving existing relationships with merchant banks and processor/acquirers and POS solution vendors. Smart Pay reduces TCO by eliminating the need for additional hardware to power your mPos device.



THIS IS HOW YOU WIN WITH HONEYWELL

Honeywell has been serving the retail industry for 75 years, and we are dedicated to continuing our support of operational innovation. When you team with Honeywell, you benefit from the depth of industry knowledge and expertise that our teams have crafted and refined. Our solutions are designed to help you stay on the forefront of operational and retail technology. Our team-oriented support and service is aimed at helping you address your most critical needs. Honeywell has engineered a broad portfolio of software, platforms, and devices designed to improve critical workflows within retail stores and distribution centers. Our solutions are tested across thousands of customer deployments worldwide to help enhance employee experience, process efficiencies and inventory accuracy.

The retail environment is ever-changing. You need to ensure you're prepared to win on every front and ensure your brand sticks out among the rest. Honeywell can help. [Contact](#) a Honeywell Retail Expert today!

**Honeywell**

For more information
sps.honeywell.com

Honeywell Safety and Productivity Solutions
855 S Mint St
Charlotte, NC 28202
800-582-4263
www.honeywell.com

Retail Solutions Best Sellers eBook | Rev B | 11/24
©2024 Honeywell International Inc.

