



WAREHOUSING, MANUFACTURING, TRANSPORTATION, AND LOGISTICS

DISCOVER OPPORTUNITY AT  scansource®

we **DO** that

Ready to manufacture a brighter future for your business?
RACK UP SUCCESS WITH THESE NEW OPPORTUNITIES.

Warehousing, manufacturing, transportation, and logistics are poised for expansion, driven by factors such as increasing consumer demand, eCommerce growth, technological advancements, and the need for optimized supply chain management.

With automation, sustainability initiatives, and innovative logistics solutions in high demand, it's time to drive your business forward with new and improved solutions.

TRENDS THAT DEMONSTRATE OPPORTUNITIES IN WAREHOUSING, MANUFACTURING, AND T&L

AUTOMATION

Automation, robotics, AI, and IoT are making these industries more efficient, sustainable, and competitive.

- The global warehouse automation market is estimated to grow at a CAGR of 14%, reaching a value of \$30 billion by 2026.

Source: Statista: Worldwide Warehouse Automation Market Size

- Recent warehouse automation trends include retrofitting traditional forklifts to enable automation during peak seasons, when peak efficiency is required, and using them manually when demands are back to normal.

Source: Fortune Business Insights

- The IoT in the manufacturing market will reach up to \$399.08 billion in value by 2026 at a Compound Annual Growth Rate (CAGR) of 14.5%.

Source: Statista

- The global logistics and transportation drone market will grow at a CAGR of 10.8% during 2022 and 2028 to reach \$12180 million by 2028 from \$5752.2 million in 2021.

Source: Absolute Reports



JOB CREATION

These sectors provide a wide range of job opportunities, from entry-level to highly skilled roles, making workforce management solutions necessary.

- As many as 749,000 jobs were brought back to the U.S. between 2010 and 2018 as a result of reshoring.

Source: Reshoring Initiative

EFFICIENCY

Initiatives to improve productivity are vital for facilitating the movement of goods.

- 62% of respondents reported human error from manual process management as the #1 root cause of inventory fulfillment issues.

Source: Stitch Labs

- Travel time in a warehouse or distribution center accounts for up to 50% of total picking time.

Source: Amware Fulfillment





SOLUTIONS THAT SUPPORT THESE TRENDS



INDUSTRIAL LABEL AND TAG PRINTING
Enable precise and durable labeling for inventory management, asset tracking, and compliance.



SCANNING
Increase accuracy when tracking and labeling inventory.



RFID
Improve inventory accuracy, streamline operations, and enhance supply chain visibility.



IOT
Optimize inventory placement, reduce stockouts, and avoid overstock.



WEARABLES
Increase worker productivity, safety, and efficiency through real-time data access and hands-free operation.



CYBER SECURITY
Safeguard sensitive data, production processes, and supply chain operations.

Zebra WS50:
Unparalleled functionality and flexibility in this extremely compact wearable computer!



Cisco Umbrella:
Building security resilience for manufacturing.



PHYSICAL SECURITY
Secure access to facilities and assets.



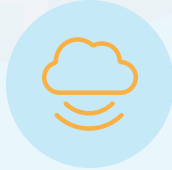
BLOCKCHAIN/COLDCHAIN
Provide transparent, secure, and tamper-proof records of supply chain transactions.



NETWORKING
Provide secure and robust connections to power your automation.



COMMUNICATION DEVICES
Enable real-time coordination, reduce downtime, and enhance operational efficiency.



UC/UCAAS
Facilitate seamless communication, collaboration, and information sharing.



INVENTORY MANAGEMENT SOFTWARE
Optimize stock levels, reduce carrying costs, and improve order accuracy.